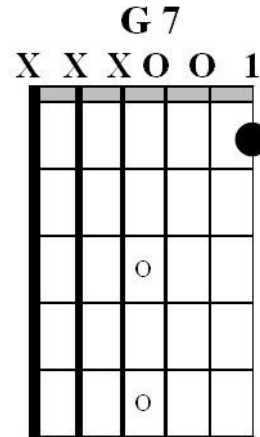
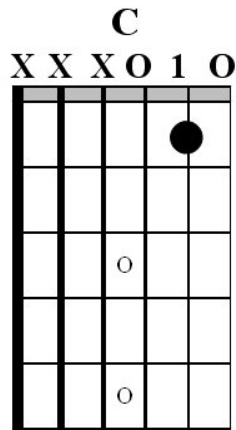


Your first chords.

1. Both chords use finger 1 - your pointer finger.
2. Only strum the three high sounding strings - try not to strum any of the low strings.
3. Check the sound of each string by forming the chord and then picking each string in the chord to make sure that the string rings clearly. Don't race across the strings. Take your time to listen to each string before you move to the next string.

If the string does not ring clearly you could be -

- (a) not squeezing hard enough.
(Don't squeeze too hard either).
- (b) pressing your finger on the fret metal and not behind it.
- (c) letting a finger fall over and touch another string.

Songs with C and G7.

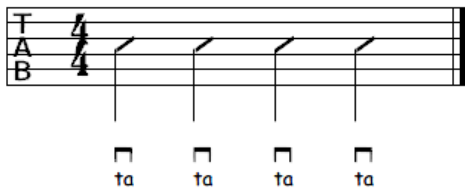
This song has the time signature of $\frac{4}{4}$, so we strum 4 times for every bar.

Only try to strum the three high strings.

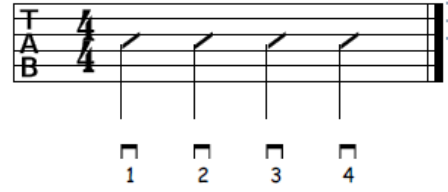
Strum down towards the floor.

Make sure to count out loud when you are practicing.

Count either of these ways when you strum.



OR



Firstly just the chords. Remember all down strums.

London Bridge

Two musical staff diagrams for the 'London Bridge' exercise. Each diagram shows a 4/4 time signature and four measures. The first diagram has chord labels C, G7, and C above the measures. The second diagram has chord labels C, G7, and C above the measures. Both diagrams show downstrokes for each measure, with counting 'ta' or numbers 1-4 below. The second diagram includes a small square icon above the first 'ta' and numbers 1-4.

Now the chords, melody and words. Remember to still strum all down strums.

London Bridge

C *G7* *C*

Lon don bridge is fall ing down, fall ing down, fall ing down.

C *G7* *C*

Lon don bridge is fall ing down, my fair la dy.

This song is also in $\frac{4}{4}$. Use the same strumming as London Bridge.

Firstly just the chords.

This Old Man

intro *C* *G7*

ta ta ta ta ta ta ta ta or 1 2 3 4

C *G7* *C*

1 2 3 4

This Old Man

intro
C

G7

This old man, he played one, He played knick knack on my drum, with a

C G7 C

Knick knack pad dy wahck, give the dog a bone. This old amn came roll ing home.

Detailed description: The image shows two lines of guitar tablature for the song 'This Old Man'. The first line is an introduction in 4/4 time, starting with a C chord and moving to a G7 chord. The second line contains the main melody with lyrics. Chords C, G7, and C are indicated below the lyrics. The tablature uses numbers 0-3 for frets and includes slurs and ties to indicate phrasing.