

TAB

TAB is a special way of writing music for guitars.

The low line of the diagram is for your low sounding string - the sixth string - the thick string.

TAB has 6 lines - a line for each string on the guitar.

The high line of the diagram is for your high sounding string - the first string - the thin string.

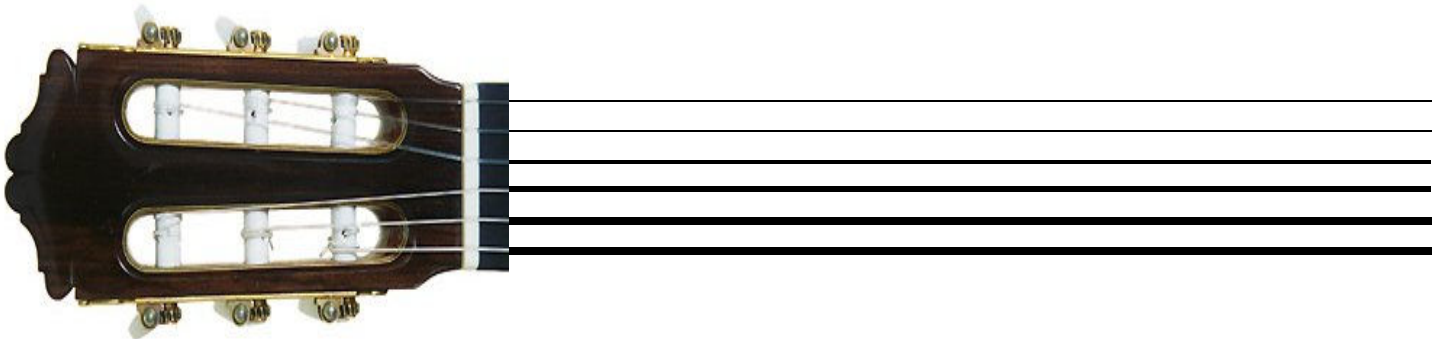
This is the high sounding string - string number 1. 

T
A
B

This is the low sounding string - string number 6. 

If you see the TAB with a guitar head added it can make more sense.

Sometimes the lines of TAB are shown with thickness to be able to see which string more clearly. Mostly though the lines will be the same thickness.



To show which fret to play a number is added on top of the line for that string.

This is telling you to play fret 3 on string one. The number 3 is the fret, and the number is on the high line which shows us string 1.

3
T
A
B

This is telling you to play fret 2 on string six. The number 2 is the fret, and the number is on the lowest line which shows us string 6.

T
A
B
2

This is telling you to play fret 4 on string three. The number 4 is the fret and the number is on the third line from the top which shows us string 3.

T
4
A
B