

#-----PLEASE NOTE-----#  
 # This file is the author's own work and represents their #  
 # interpretation of the song. You may only use this file for #  
 # private study, scholarship, or research. #  
 #-----#

# Keep Holding On

Avril Lavigne

## The Basic Ingredients :

### Song Parts.

Chord Pattern 1. Used in the intro, verse and chorus.

| G | D | Em | C |

Chord Pattern 2. Used at the end of the verse.

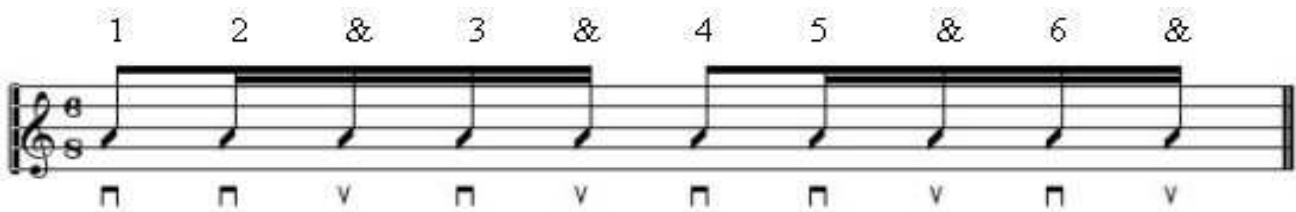
| Em | C | Em | C D |

Chord Pattern 3. Used in the middle.

| Am | C | Am | Em |

| Am | C | % | C D |

Suggested Strum. Strum for six eight.



Chord Shapes. Open chords.

Time signature. 6  
8

# Keep Holding On

Avril Lavigne

6

Time signature.

8

## INTRO 1.

| G | D | Em | C |

## VERSE 1.

| G | D | Em | C |  
You're not a - lone, Together we stand, I'll be by your side, you know I'll take your  
| G | D | Em | C |  
hand. When it gets cold, and it feels like the end. There's no place to go you know I won't give  
| Em | C | Em | C D |  
in. No, I won't give in.

## CHORUS 1.

| G | D | Em | C |  
keep hold - ing on. 'cause you know we'll make it through, we'll make  
it through.  
| G | D | Em | C |  
Just stay strong, 'cause you know I'm here for you, I'm here for you.  
| G | D | Em | C |  
There's nothing you can say, nothing you can do. There's no other way when it comes to the truth so  
| G | D | Em | C |  
keep hold - ing on. 'cause you know we'll make it through, we'll make  
it through.

## VERSE 2.

| G | D | Em | C |  
So far a - way, I wish you were here, Before it's too late, this could all disa -  
| G | D | Em | C |  
pear. Before the doors close, and it comes to an end. With you by my side I will fight and de -  
| Em | C | Em | C D |  
fend. I'll fight and de- fend.

## CHORUS 2.

<b>G</b> keep	<b>D</b> hold - ing	<b>Em</b> on. 'cause you know we'll	<b>C</b> make it through, we'll make it through.
<b>G</b> Just	<b>D</b> stay	<b>Em</b> strong, 'cause you know I'm	<b>C</b> here for you, I'm here for you.
<b>G</b> There's nothing you can say,	<b>D</b> nothing you can do.	<b>Em</b> There's no other way when it comes to the truth so	<b>C</b>
<b>G</b> keep	<b>D</b> hold - ing	<b>Em</b> on. 'cause you know we'll	<b>C</b> make it through, we'll make it through.

## MIDDLE.

<b>Am</b> Hear me when I say	<b>C</b> I believe	<b>Am</b> that nothin's gonna change, nothin' gonna	<b>Em</b> change destiny.
<b>Am</b> Whatever's meant to be will work out perfectly.	<b>C</b>	<b>%</b> Yeah yeah	<b>C</b> <b>D</b> Yeah yeah
<b>G</b> La, da, da, da	<b>D</b> La, da, da, da	<b>Em</b> La, da, da, da	<b>C</b> La, da, da, da

## CHORUS 3.

<b>G</b> keep	<b>D</b> hold - ing	<b>Em</b> on. 'cause you know we'll	<b>C</b> make it through, we'll make it through.
<b>G</b> Just	<b>D</b> stay	<b>Em</b> strong, 'cause you know I'm	<b>C</b> here for you, I'm here for you.
<b>G</b> There's nothing you can say,	<b>D</b> nothing you can do.	<b>Em</b> There's no other way when it comes to the truth so	<b>C</b>
<b>G</b> keep	<b>D</b> hold - ing	<b>Em</b> on. 'cause you know we'll	<b>C</b> make it through, we'll make it through.

## ENDING.

<b>G</b>	<b>D</b>	<b>Em</b> keep	<b>C</b> hold - ing on.
<b>G</b>	<b>D</b>	<b>Em</b> keep	<b>C</b> hold - ing on.
<b>G</b> There's nothing you can say,	<b>D</b> nothing you can do.	<b>Em</b> There's no other way when it comes to the truth so	<b>C</b>
<b>G</b> keep	<b>D</b> hold - ing	<b>Em</b> on. 'cause you know we'll	<b>C (Hold for 2 bars)</b> make it through, we'll make it through.
<b>C</b>			