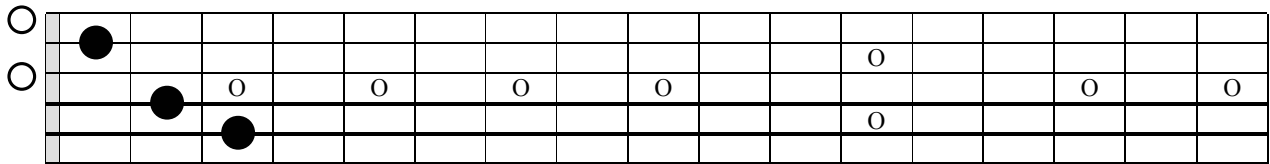


5 MAJOR CHORD SHAPES
(FOR ALPHABET NAME C MAJOR)

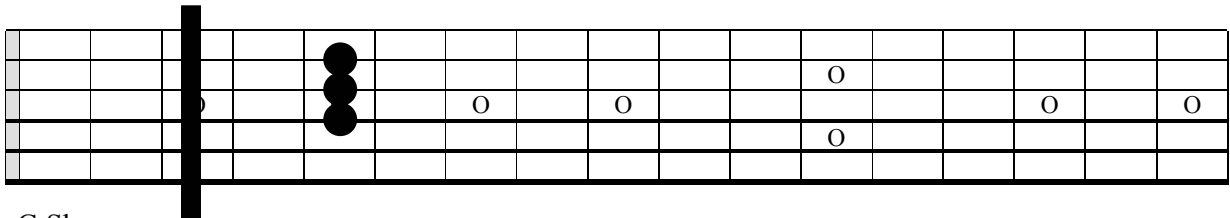
Notice the order of the chord shapes spells the word CAGED. Also notice that each chord shape has some notes in common with both its lower and upper neighbouring shape -

mostly the furthest out finger/s is in the same fret as the bar for the next higher shape and the bar is in the same fret as the highest finger for neighbouring lower shape.

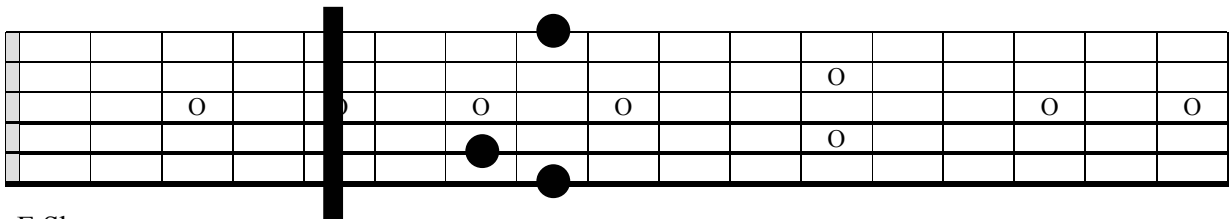
C Shape.



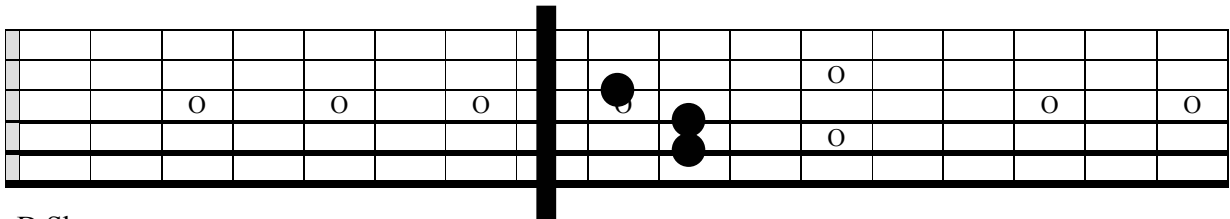
A Shape.



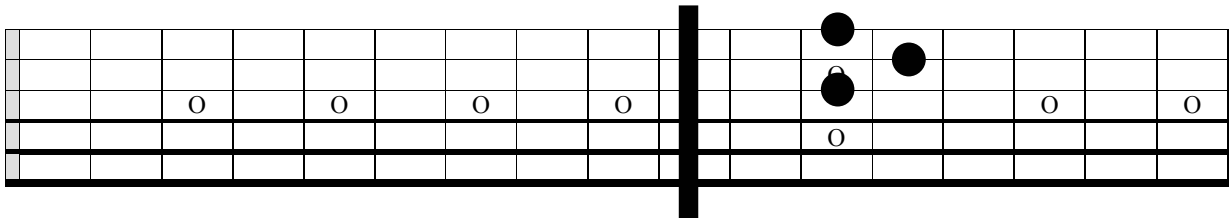
G Shape.



E Shape.



D Shape.



C Shape – an octave higher.

