

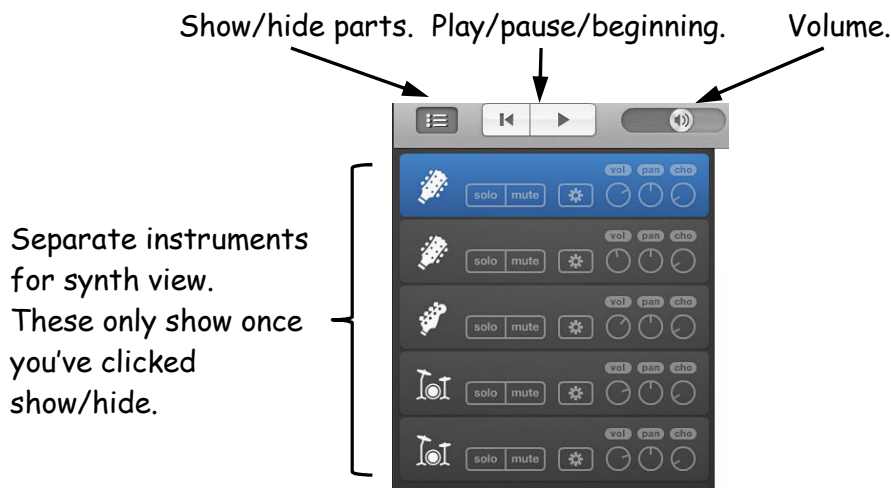
Go Play Along Instructions.

Here are the instructions for using the player.

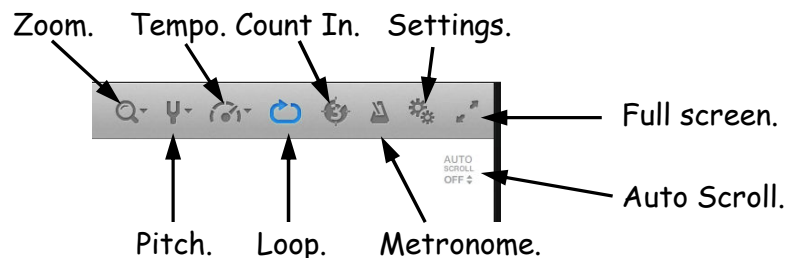
You can control many things with this software. Most of the controls are in the grey area at the top of the song. We'll look at each one from left to right.

Remember you can highlight one bar, many bars or the whole piece to work with. For example you might highlight the first verse to really work on that.

Controls on the left.



Controls on the right.



1. **Show/hide parts.** This is only valid for songs that are in "synth" mode. If you are using an audio page then there's no point using it.

In synth mode click on the "show/hide parts" to open up the menu. You'll see a line for each instrument in the piece. You can click on each instrument to see their music and options.

Options include "solo" and "mute". Click on solo to only hear that instrument - great to be able to focus on just one thing. Click on mute to turn it off. You can still hear the rest of the band and add your part to this - a great backing track.

Next is instrument choices. This is shown by the wheel photo. Here you can change the track to another instrument. There's a

large list of over 100 to choose from.

Next is volume. You can adjust the volume of each track. Click and hold the button with the left mouse button. Drag to the left to make change the volume lower or drag to the right to make the volume higher. Even though the shape is a circle it can only be dragged horizontally left or right. You'll notice little arrows appear when you first click on the button to remind you of dragging left or right.

Next is pan. You can adjust which speaker each instrument will be heard from. Either the left speaker or the right speaker - even a mixture. Click and hold the button with the left mouse button. Drag to the left to make the volume be more from the left speaker or drag to the right to make the volume be more from

2. **Rewind/play.** You can choose to play the song.
3. **Volume.** Grab the "speaker" with the left mouse button. Drag to the left to turn down or drag to the right to turn up.
4. **Zoom.** You can change the view size of the music. Click on the magnifying glass and the zoom slider appears. Click and hold the slider with the left mouse button. Drag to the left to make the view smaller or drag to the right to make the view larger.
5. **Pitch.** You can change the pitch of the music. Click on the tuning fork and the pitch slider appears. Click and hold the slider with the left mouse button. Drag to the left to make change the pitch lower or drag to the right to make the pitch higher. You can

the right speaker. Even though the shape is a circle it can only be dragged horizontally left or right. You'll notice little arrows appear when you first click on the button to remind you of dragging left or right.

Next is chorus. This one will almost never be changed. You can adjust how much of this effect will be on each track. Click and hold the button with the left mouse button. Drag to the left to make change the chorus lower or drag to the right to make the chorus higher. Even though the shape is a circle it can only be dragged horizontally left or right. You'll notice little arrows appear when you first click on the button to remind you of dragging left or right.

There's also a link to the home page of the software maker.

also choose to transpose the notes - this will move the notes to their new frets depending on how far you transpose.

6. **Tempo.** You can change the tempo (speed) of the music. Click on the speed dial and the tempo slider appears. Click and hold the slider with the left mouse button. Drag to the left to make the tempo slower or drag to the right to make the tempo faster.

There is an extra function here called "Tempo Trainer". This lets you change the starting speed and end speed of a loop. Then you can also control how much faster each loop gets.

7. **Loop.** A simple on or off switch that turns on looping.
8. **Count In.** Another on and off button that controls the count in.
9. **Metronome.** A simple on or off switch. The metronome will play in the background if you turn it on. You'll hear a different sound for count one compared to the other counts of the bar.
10. **Settings.** You can change a few things in here, but generally you won't need to use this.
11. **Full Screen.** Click on this to make the song display as full screen. One annoying thing that the "flash Player" does is tell you that you're in full screen - you have to click on "Allow" to get rid of this statement.
12. **AUTO Scroll.** When this is on the music will move up the page to follow the music. The default setting is off as most songs are short. We're supposed to set longer songs to on, but we may miss this. Just click on auto scroll to switch between on and off.